

Kim's Auctions

329 Warrigal Rd
Burwood Vic 3125

Phone: 03 9808 1684

An abstract painting featuring a face rendered in various shades of blue and black. The face is composed of thick, expressive brushstrokes, with a large, dark, circular shape for the head and a lighter, more defined area for the face. The background is a dark, textured blue. The overall style is expressive and modern.

Day One House Contents Balwyn Catalogue

Saturday 4th June 2022

To be held on location at:
9 Chelmsford St Balwyn North 3104

Starting at 11:00am

Terms: Eftpos, Cash, Credit Card 1.5% surcharge
18% Buyers Premium applies plus GST

Kim's Auctions



Lot: 1

Estimate: \$300-500

French gilded console table 79CM H 123CM W 40CM D



Lot: 2

Estimate: \$2500-3500

French 19th Century Louis XVI Style Ormolu and White Carrara Marble Portique Clock by T. Comelin , Paris, with eight-day movement, white enamel dial, striking on a single bell, the case with pineapple finial and birds nest with birds. Good working order, keys included



Lot: 3

Estimate: \$800-1600

Royal Vienna floral and porcelain gilt decorated, 2 handled lidded vases.



Lot: 4

Estimate: \$400-600

French Limoges magenta porcelain, floral & gilt decorated terrine on stand.



Lot: 5

Estimate: \$3000-5000

High quality 3 piece Salon suite with two oversized velvet upholstered and silver gilt accented sofas and a 2 tier glass top coffee table.



Lot: 6

Estimate: \$200-300

7 large designer cushions



Lot: 7

Estimate: \$800-1600

Tall Sevres style blue porcelain and bronze mounted, 2 handled vase



Lot: 8

Estimate: \$1800-2400

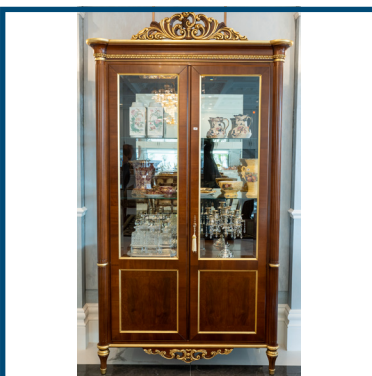
A French Marquetry inlaid 2 Drawer Commode serpentine shape with marble top C 1900 L XV manner W 78 cm



Lot: 9

Estimate: \$3000-5000

Large Versace style designer rug. 310cm x 240cm



Lot: 10

Estimate: \$1500-3000

Superb Italian 2 door display cabinet with gilded highlights. Made in Italy by Scappini & Co. 240cm H x 130cm W x 45cm D



Lot: 11

Estimate: \$250-350

2 Meissen Jugs in hand painted Mandalay pattern



Lot: 12

Estimate: \$1000-2000

Pair of 'Famille Rose' hand painted with Spring scene, square vase. with Yongzhen seal on base. 26cm H



Lot: 13

Estimate: \$100-200

French style export porcelain vase and lidded bowl.



Lot: 14

Estimate: \$300-500

Set of 3 Ainsley hand painted porcelain vase, comport and display plate



Lot: 15

Estimate: \$150-250

4 branch silver plated candelbra with crystal drops



Lot: 16

Estimate: \$250-500

3 crystal bottle tantalis on epns silver frame



Lot: 17

Estimate: \$8000-12000

Pro Hart (1928 - 2006) Rounding up Sheep, oil on board, 44x59cm, signed & dated '68 lower right



Lot: 18

Estimate: \$2500-3500

Yitao Liu,(Born 1955 China),Tiger lilies , watercolor on rice paper,67x 67 cm ,signed lower left (In 1997, Yitao Liu was awarded the title of 'One of the hundred most outstanding artists of China' by the China Federation of Literary and Art Circles.)



Lot: 19

Estimate: \$700-800

WICKHAM PERRY OIL ON BOARD GOLD FRAME SIGNED LOWER RIGHT COUNTRY SCENE



Lot: 20

Estimate: \$4000-6000

A silver framed 19thC Tibetan hand painted tanka 65cmH 43cm W

Kim's Auctions



Lot: 21

Estimate: \$2000-4000

Pasquale Giordino Acrylic on Canvas 61cm x 81cm. Signed top right



Lot: 22

Estimate: \$1200-1800

Alvaro Castagnet (B1954) 'Grazing in Apollo Bay' Watercolor
,54x75cm,signed lower right



Lot: 23

Estimate: \$1000-2000

A large sculpture of David AF 130CMH



Lot: 24

Estimate: \$3000-6000

Janet Forrester oil on canvas 117 x 180



Lot: 25

Estimate: \$2000-3000

A pair of gold framed watercolours by Thomas Pyne 1916 of country scenes

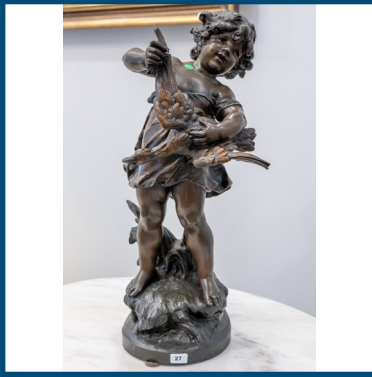
Kim's Auctions



Lot: 26

Estimate: \$1000-1800

A pair of hide leather upholstered stool with wooden legs BRAND NEW



Lot: 27

Estimate: \$1000-15000

A fine French 19thC Spelter statue of cupid holding a duck..signed Auguste Moreau 55cm H



Lot: 28

Estimate: \$600-1200

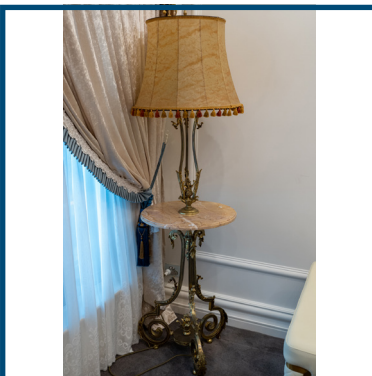
French Louis XV1th lacquered lamp tablewith white marble top.77CM H
50CM D 75CM L approx



Lot: 29

Estimate: \$3000-4000

A FINE QUALITY 2 SEAT LEATHER SOFA WITH BRASS BANDING
AND DECORATIVE DIAMOND UPHOLSTERY. 82cm h 171cm w 88cm d



Lot: 30

Estimate: \$1200-1800

19thC French bronze floral standard lamp with circular marble top and
shade

Kim's Auctions



Lot: 31

Estimate: \$200-400

Royal Doulton lady figurine wearing green dress while dancing. 18cm H
13cm W



Lot: 32

Estimate: \$200-400

Early 20th Century Carriage clock with alarm in gilded brass, in working
order. 20cmH



Lot: 33

Estimate: \$2000-4000

Rare natural red coral sculpture of mother and child. 23.5 cm L



Lot: 34

Estimate: \$200-400

Set of 3 early european porcelain figurines



Lot: 35

Estimate: \$300-500

Yellow soap stone panel on wooden stand signed lower left



Lot: 36

Estimate: \$1000-2000

Ivory carved Fishing Scene on wood base



Lot: 37

Estimate: \$100-200

Bohemian cut ruby crystal vase 19cm h



Lot: 38

Estimate: \$500-800

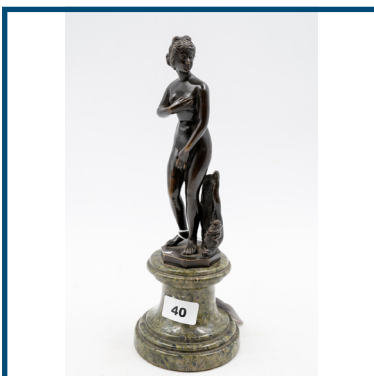
Early Chinese hand carved soap stone long life statue, 25cm H



Lot: 39

Estimate: \$200-300

Bohemian green and gold vase and bell. Vase 25cm H



Lot: 40

Estimate: \$300-600

19th C French bronze nude lady statue on marble base. 21cm H



Lot: 41

Estimate: \$150-300

Chinese Republican Famille Rose Porcelain vase 35cm height. Good condition



Lot: 42

Estimate: \$650-850

A Chinese Hongshan jade hook shaped pendant Pierced on the top for suspension. Circa: 3rd Millennium BC Hongshan culture, China



Lot: 43

Estimate: \$400-600

Good 19th Century Chinese Carved Jade group of two birds, brush washer on pierced wooden stand. 15.5cm L



Lot: 44

Estimate: \$600-900

a jadeite bangle



Lot: 45

Estimate: \$300-500

Art Glass vase



Lot: 46

Estimate: \$2500-3500

Green carved jade boat with man and cat.8cm H 18cm L



Lot: 47

Estimate: \$1000-2000

Large green carved jade scholars rock on zitan wooded stand. 20cm H



Lot: 48

Estimate: \$1000-3000

Early Ming dynasty bronze vessel with relief decoration of a snake.20cm H



Lot: 48A

Estimate: \$3000-4000

MAUREEN BAKER My Grandmother's Country, 2018 Black Box Frame
Synthetic Polymer Paints on Belgian Canvas 1016 x 1219 mm comes with
certificate



Lot: 49

Estimate: \$100-300

.Antique Chinese Flambe glazed vase 25cm Good Condition

Kim's Auctions



Lot: 50

Estimate: \$1000-1500

Theo Delgrosso, 1947 - 2011) The Majestic Gums, oil on Canvas Board, 49 x 74 Cm, Signed Lower Left



Lot: 51

Estimate: \$200-300

A Boxed Silver three Piece Mustard Set, stamped Denmark 925



Lot: 52

Estimate: \$200-400

A pair of French pewter Maiden figure statues. 27cm H



Lot: 53

Estimate: \$80-150

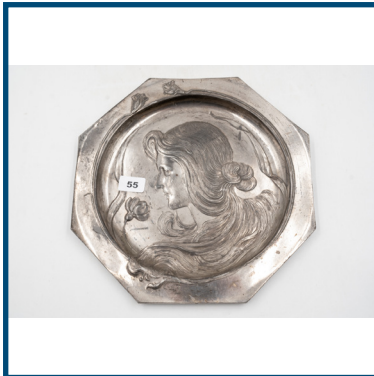
WMF shallow dish with boy & rooster decoration



Lot: 54

Estimate: \$250-500

Rare Victorian Crown Devon hand painted whiskey jug with stopper



Lot: 55

Estimate: \$80-150

WMF shallow dish with lady & flowers decoration



Lot: 56

Estimate: \$400-600

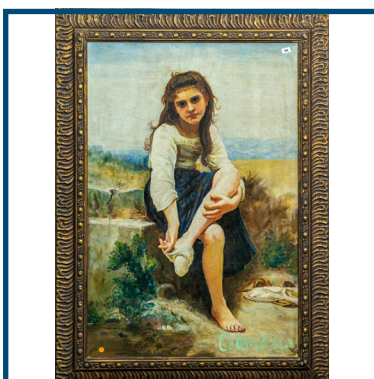
Pair of green and floral glass vases



Lot: 57

Estimate: \$1500-3000

A 19th C. pr of Chinese Dragon Decorated floor vases in Repousse Copper
H 64 cm



Lot: 58

Estimate: \$800-1200

British School 'Going Barefoot' oil on canvas, signed lower right, 89cm x 60cm



Lot: 59

Estimate: \$600-1000

John Tiplady (Born 1938)- Paris Street Scene, oil on canvas, 39x49cm, signed lower left`

Kim's Auctions



Lot: 60

Estimate: \$800-1200

John Leo Borrack, (b.1933), Towards Alice Springs Watercolor and Gouache on Paper, 26 x 73.5, Signed Lower Right



Lot: 61

Estimate: \$500-1000

Victorian flame mahogany 4 door bookcase 238cm H 122CM W 45CM D



Lot: 62

Estimate: \$800-1500

large gilded overmantle mirror french style. 155cm H 120CM W



Lot: 63

Estimate: \$5500-7000

1.41ct white gold set (18ct) diamond studs 75 & .76ct respectively, SI clarity J butterfly backs Valuation \$12900



Lot: 64

Estimate: \$6500-7500

18ct white gold emerald & diamond ring. Centre set with an oval rose cut diamond g colour s I clarity halo set with 14 stunning medium green emeralds and a further 12 rose cut f colour diamonds SI clarity 2020 Valuation \$14 000



Lot: 65

Estimate: \$3000-4000

18ct white gold diamond ring set with Vs clarity Cognac diamond .50ct and a further two round brilliant cut diamonds 6 claw set G colour SI clarity
Valuation 2021 \$6950



Lot: 66

Estimate: \$15000-18000

8.5ct sapphire & diamond ring. Set in 18ct white gold surrounded with 10 x .25ct 2.50ct diamonds of excellent colour & clarity Valuation 2008 \$29150



Lot: 67

Estimate: \$25000-35000

Stunning 6ct square cut sapphire deep blue of gem quality 10x9.8x6.1 mil, with 22 round brilliant cut diamonds set to the shoulder of the ring which is 18ct white gold. The diamonds are F colour si clarity with a further 16 round brilliant cut diamonds surrounding the centre sapphire also f colour SI clarity the ring weight is size 'M' resizable. Valuation 2018 \$68 500



Lot: 68

Estimate: \$3000-6000

4K Yellow Gold, Fancy Yellow Diamond, Rolex Inspired Gents Ring. The centre features, one round brilliant cut, fancy yellow, Diamond (1.16ct, VS2 clarity), bezel set. Surrounding the centre in a halo are, 15 round brilliant cut, Diamonds (0.30ct TDW, J-L colour, SI2-P1 clarity), bead set. The ring has been 14K White Gold Rhodium plated, to achieve a two-tone effect. Ring Size S. Comes with Valuation.



Lot: 69

Estimate: \$2000-4000

14K White Gold, Aquamarine and Diamond, Cocktail Ring. The design centrally features, one oval faceted cut, greenish-blue, Aquamarine (5.12ct, eye clean clarity), 4 claw set. Surrounding the centre in a halo are, 16 round brilliant cut, Diamonds (1.37ct TDW, J-L colour, SI2-P1 clarity), claw set. Ring Size Q. Comes with Valuation.

Kim's Auctions



Lot: 70

Estimate: \$14000-20000

Platinum 950, Sapphire and Diamond, Statement Necklace. The design features, 43 oval cut, royal blue, Sapphires (36.64ct TSW, eye clean clarity), 4 claw set. Surrounding the Sapphires in individual halos are, 691 round brilliant cut, Diamonds (7.73ct TDW, G-H colour, SI-P2 clarity), bead set. The necklace features a spring tongue clasp and safety lock bar. The necklace measures 46cm in length. Comes with Valuation.



Lot: 71

Estimate: \$1000-1500

Large dark blue glaze seal with lion decoration 23cm H



Lot: 72

Estimate: \$400-800

Heavy Val Saint Lambert ruby and clear crystal vase. Signed to the base. 25cm H



Lot: 74

Estimate: \$2200-2500

Masons 8 piece floral tea service



Lot: 75

Estimate: \$250-350

Raymond Weil wrist watch



Lot: 76

Estimate: \$250-350

Tissot wristwatch



Lot: 77

Estimate: \$600-1000

Nicely inlaid shaped front, ormolu mounted, single door display cabinet with 1 key.



Lot: 78

Estimate: \$150-250

Framed gold leaf country scene 15cm H X 25cm L



Lot: 79

Estimate: \$300-500

Barry Chamberlain, (Born 1928), Sunny Homestead, Oil On Board, 15 x 41 Cm, Signed Lower Left



Lot: 80

Estimate: \$40-80

set of 12 collectable wooden hand painted hairbrush in box

Kim's Auctions



Lot: 80A

Estimate: \$20000-30000

Shen Yinmo 1883-1971 pair of hand written scrolls. Unframed .135cm x 35 cm



Lot: 81

Estimate: \$300-500

collection of 8 wooden hand carved masks



Lot: 82

Estimate: \$100-200

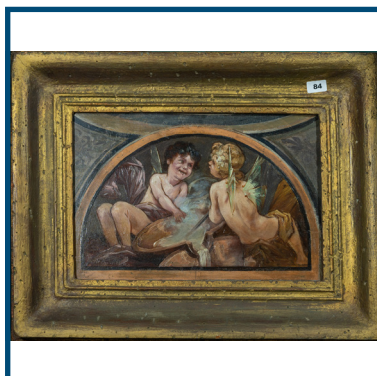
1920's William Moorecroft shallow bowl. 14cm W



Lot: 83

Estimate: \$20-80

Horn Beaker. 7cm H



Lot: 84

Estimate: \$600-1200

Frederick Klein Chevalier. Oil on board



Lot: 85

Estimate: \$300-600

Provincial Chinese, Green Glazed Ginger Jar



Lot: 86

Estimate: \$100-200

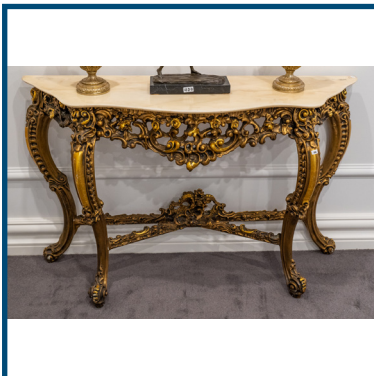
French white covered pot with gold handles



Lot: 87

Estimate: \$300-500

Early Chinese Ming Dynasty Blue & White Brush rest. 10 character mark to base. 10cm W x 2.5cm H



Lot: 88

Estimate: \$1000-2000

Italian Louis XVth giltwood and marble console table 85CM H 135CM W 40CM D



Lot: 89

Estimate: \$500-800

Bronze double handled incense burner with XUANDE Seal



Lot: 90

Estimate: \$2000-3000

Set of 48 piece cutlery setting. European silver. comprising 6 soup spoons, 6 dinner knives, 6 dinner forks, 6 dessert spoons, 6 dessert forks, 6 dessert knives, 6 tea spoons, 4 serving spoons, 1 sauce spoon, 1 serving fork



Lot: 91

Estimate: \$200-400

William Moorecroft 'Burslem' shallow dish. 11cm W



Lot: 91A

Estimate: \$400-600

Western Asiatic copper arrow. 1st Millenium BC Persia



Lot: 91B

Estimate: \$2000-3000

Hellanistic terracotta figure Cica 300BC 31CM H COMES WITH CERTIFICATE



Lot: 92

Estimate: \$200-400

Royal Doulton 'Dewars' Jug. 24cm



Lot: 93

Estimate: \$750-1500

Carved ivory monk with tree. 24cm H



Lot: 94

Estimate: \$100-200

Small carved ivory lidded jar 6.5cm W x 4cm H



Lot: 95

Estimate: \$250-500

Carved Ivory Lidded Jar 8cm H x 11cm W



Lot: 96

Estimate: \$800-1600

Early Chinese red lacquered vase 31cmH



Lot: 97

Estimate: \$2000-3500

Fine Victorian sterling silver fruit basket.28cm H 35cm W 29cm D

Kim's Auctions



Lot: 98

Estimate: \$4500-6500

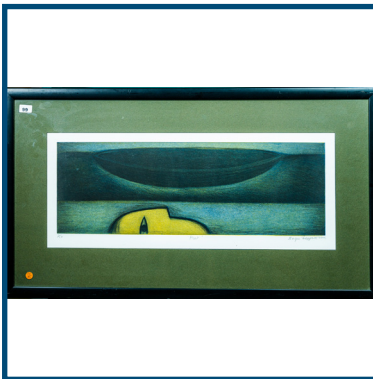
A rectangular sterling Silver Banquet Tray with handles and Centrally inscribed in Latin Crux Potestas Uei ,Made by Roberts And Belk Sheffield 1906.Hallmarked Weight 4100 grams L69cm W39 cm



Lot: 98A

Estimate: \$3000-5000

An ancient Egyptian lime stone statue of the god Ptah. Middle Kingdom. 2030 BC - 1650 BC. Luxor, Egypt.



Lot: 99

Estimate: \$400-600

Margie Sheppard,(Born 1953),Float , Colored Etching,17 x 51.5 Cm
Numbered11/40,Signed Below margin Lower Right



Lot: 100

Estimate: \$20000-30000

David Boyd (1924-2011) Children at the Sea, oil on canvas, 78x98cm, signed & dated 1970 lower left



Lot: 101

Estimate: \$1000-1500

Pair of 19th C French oak pedestals 115CM H



Lot: 102

Estimate: \$700-1100

Superb Pair of upholstered Indian Rams Head Chairs



Lot: 103

Estimate: \$20-80

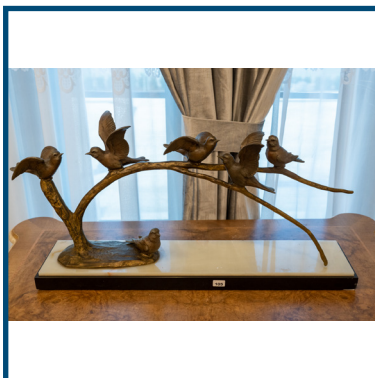
Royal Doulton mother and child figurine



Lot: 104

Estimate: \$200-400

Royal Doulton lady figurine wearing orange dress while dancing. 19CM H
18CM W



Lot: 105

Estimate: \$800-1500

French mid 20thC bronze and spetler bird statue on marble and onyx base



Lot: 106

Estimate: \$700-1200

Magnificent 20thC Italian walnut inlaid 3 drawer cabinet. 80CM H 102CM W
60CM D



Lot: 107

Estimate: \$800-1800

French provincial oak long case clock complete with pendulum and weights.
225 cm K



Lot: 108

Estimate: \$150-300

French Inkwell on Rouge Marble base with seal decoration



Lot: 109

Estimate: \$100-200

Brass table lamp with pink glass light shade with fringe



Lot: 110

Estimate: \$3000-5000

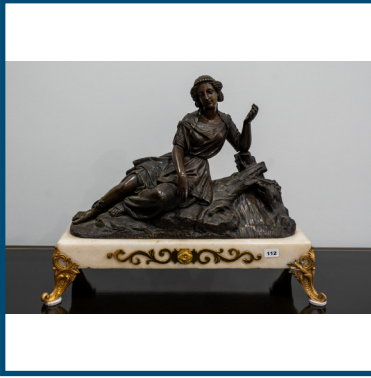
Magnificent Italian walnut directors desk with 5 drawers and 1 cupboard.
Leather inlay. 82CM H 200 CM L 90CM D



Lot: 111

Estimate: \$4000-6000

A Kashmiri Hand Knotted Pure Silk Carpet with an overall Floral Design
with a Central medallion, 2.9 x 1.8cm



Lot: 112

Estimate: \$1000-2000

French 19th century French bronze maiden statue on marble & bronze base



Lot: 113

Estimate: \$300-500

A Pair of Chinese Porcelain Hexagonal Waisted Baluster shaped Vases with two Lug Handles ,profusely hand painted with a Dragon and Fish Design,H44,D 17 Cm



Lot: 114

Estimate: \$1000-1500

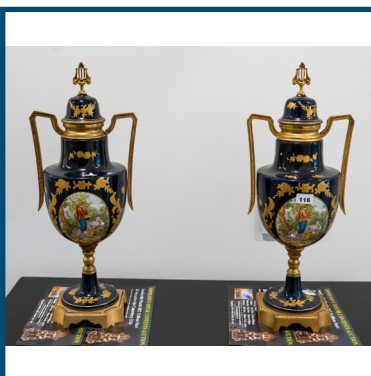
A Louis XVth bronze mounted ansonia mantle clock



Lot: 115

Estimate: \$1000-1500

A Pair of French Finial Topped and Ormolu Mounted Floral Decorated White Marble Castolettes ,H 42 D 13 Cm



Lot: 116

Estimate: \$1000-1500

A pair of French mid 20thC Sevres style porcelain lidded vases with brass mounts



Lot: 117

Estimate: \$300-400

Pair of Victorian silver plate candle sticks..44CM H



Lot: 118

Estimate: \$1000-2000

a French 19thC Louis XVth Green handpainted mantle clock



Lot: 119

Estimate: \$800-1200

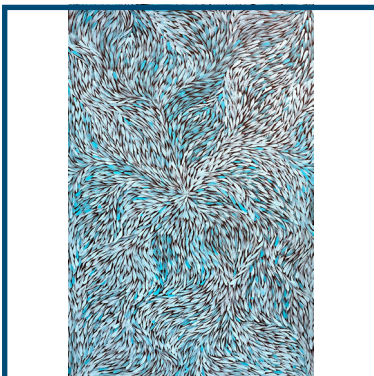
A fine pair of Royal Dux porcelain vases decorated with figures. 42CMH



Lot: 120

Estimate: \$300-600

Meiji period Large Japanese Bronze Figural sculpture depicting a man. 42cm H



Lot: 120A

Estimate: \$3000-4000

Jeannie Pitjara { Pettyarre} "bush medicine leaves" synthetic polymer paint on Belgian linen 151 x 89.5cm comes with certificate

Kim's Auctions



Lot: 120B

Estimate: \$7000-9000

CHARMAINE PWERLE Charmaine Pwerle Aweyle, 2019 Synthetic
Polymer Paints on Belgian Canvas 1360 x 1860mm



Lot: 121

Estimate: \$5000-7000

A Superb Quality Antique mahogany and Gilt Bronze mounted Breau in
Directoire manner mid 19th C.



Lot: 122

Estimate: \$100-200

Polished brass kerosene lamp



Lot: 123

Estimate: \$600-1000

French white marble and bronze pedestal



Lot: 124

Estimate: \$9000-12000

A Rare Pala Dynasty Black Stone Figure of Buddha 10th century AD

Kim's Auctions



Lot: 125

Estimate: \$2500-3500

A Bonheur du Jour Ladies Desk in Chinoiserie Lacquer Napoleon III period 1860s



Lot: 126

Estimate: \$800-1200

BORRACK John Leo (b.1933), 'Distant Mount Sonder', Watercolor & Gouache on Paper, 26 x 73.5cm, Signed Lower



Lot: 127

Estimate: \$2000-3000

XU BINHONG a pair of horse paintings



Lot: 128

Estimate: \$2000-3000

.Very fine jishi wood "pen" chair in excellent condition. 94CM H 95CM W 47CM D



Lot: 129

Estimate: \$200-400

Early 20thC walnut hand carved drum stool. 45CM H 36CM W

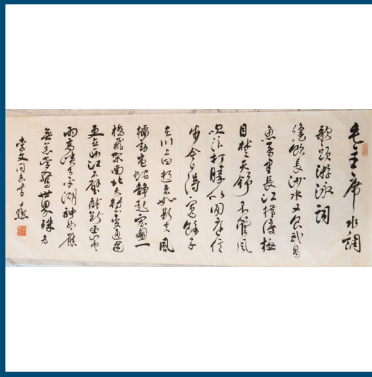
Kim's Auctions



Lot: 130

Estimate: \$1000-2000

Large green and grey jade block with tree root base decoration. 35CM H
60CM L 38CM D



Lot: 130A

Estimate: \$20000-30000

Shen YINMO 1883-1971. Calligraphy on rice paper with artist seal. 52.5cm X
155cm



Lot: 131

Estimate: \$350-700

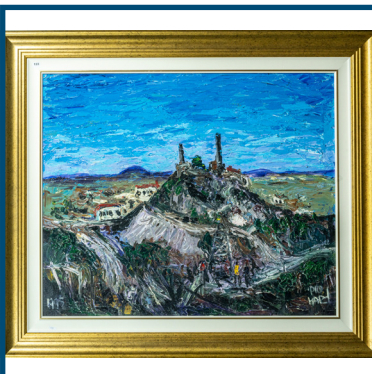
Sterling silver hip flask



Lot: 132

Estimate: \$350-700

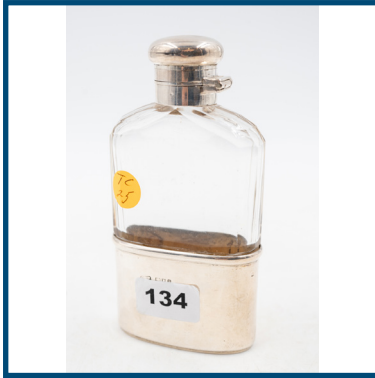
Sterling silver hip flask



Lot: 133

Estimate: \$8000-10000

Pro Hart (1928 - 2006) Mine Scene 1995, oil on canvas, 76x92cm, signed
lower right



Lot: 134

Estimate: \$200-400

Sterling Silver Drink Flask with Glass Bottle



Lot: 135

Estimate: \$30000-50000

Important Tang dynasty oil and gilt painting of Serving The Emperor in museum quality frame. 128cmH 85cmW Frame 185cmH 130cmW



Lot: 136

Estimate: \$650-1250

Very Rare Antique Imperial Russian Silver Large Enamel Spoon with relief of Empress Alexandra Feodrvana (Alix of Hesse) Hallmarks 84 silver, master DA for Andreev Dimitry, silversmith, 1835-1860. In 1849 had own workshop for the Imperial court. Good condition. 18cm long.



Lot: 137

Estimate: \$300-600

A Song Dynasty bronze bowl. Song Dynasty Circa 13th century A.D., China



Lot: 138

Estimate: \$800-1200

A Warring States beaker shaped bronze vessel. With heavily built up encrusted Verdigris oxidised patina. Warring States Period Circa 480 to 222 B.C., China



Lot: 139

Estimate: \$1500-2000

An elegant bronze sculpture of a Buddhist Stupa, with traces of gilt decoration. Circa 2nd to 3rd Century A.D., North India



Lot: 140

Estimate: \$600-1200

Early Chinese bronze water or wine vessel



Lot: 140A

Estimate: \$12000-16000

Ancient Roman mosaic of small multi-coloured square marbles depicting geometric patterns. Size: 135 cms x 75 cms. Collection of Gabriel Ojaimi.



Lot: 141

Estimate: \$2000-4000

14K Rose Gold, Kunzite and Diamond, Statement Double Halo Necklace. The centre features, one oval faceted cut, purplish pink, Kunzite (15.11ct, eye clean clarity), 4 claw set. Surrounding the centre in a double halo are, 65 round brilliant cut, Diamonds (0.79ct TDW, J-L colour, SI1-P2 clarity), claw/bezel set. Decorating the necklace are, 4 round brilliant cut, Diamonds (0.12ct TDW, J-L colour, SI1-P2 clarity), bezel set. The necklace has a parrot clasp lock. The necklace length is 46-50cm. Comes with Valuation.



Lot: 142

Estimate: \$20000-40000

18K White and Yellow Gold, Fancy Vivid Yellow Diamond, Statement Halo Ring. The design centrally features, one radiant cut, fancy vivid yellow, Diamond (2.49ct, VS1 clarity, HPHT enhanced), 4-claw set. Surrounding the centre are, 34 round brilliant cut, fancy vivid yellow, Diamonds (0.30ct TDW, VS clarity, HPHT enhanced), bead set. Surrounding the first halo and decorating the band are, 26 baguette cut, Diamonds (0.52ct TDW, F-G colour, VS-SI clarity), channel set. Surrounding the second halo and decorating the band are, 48 round brilliant cut, Diamonds (1.50ct TDW, H-I colour, VS-SI clarity), 4-claw set. Ring Size O ½. Comes with Valuation.



Lot: 143

Estimate: \$4000-6000

14K White Gold, Colombian Emerald and Diamond, Trilogy Ring. The central design features, 3 emerald cut, bluish-green, Columbian Emeralds (5.94ct TSW, eye visible inclusions), 4 claw set in Yellow Gold. Surrounding the central design in individual halos and decorating the band are, 70 round brilliant cut, Diamonds (0.55ct TDW, G-H colour, SI1-I1 clarity), micro claw set. Ring Size M. Comes with Valuation.



Lot: 144

Estimate: \$3500-4500

14K White Gold, Blue Sapphire and Champagne Diamond, Tennis Bracelet. The design features, 17 oval cut, dark blue, Sapphires (38.73ct TSW, slightly included), 4 claw set. Alternating between are, 68 round brilliant cut, champagne, Diamonds (0.98ct TDW, SI2-P2 clarity), claw set. The bracelet has a hidden box lock, with 2 figure eight safety latches. Bracelet length is 19cm. Comes with Valuation.



Lot: 145

Estimate: \$1000-2000

14K White Gold, Fancy Yellow and White Diamond, Cluster Floral Ring. The design features, 24 round brilliant cut, fancy yellow, Diamonds (0.95ct TDW, enhanced colour, SI1-SI2 clarity), claw set. Accompanied by, 7 round brilliant cut, Diamonds (0.33ct TDW, H-J colour, Si2-P2 clarity), claw set. Ring Size L 1/2. Comes with Valuation.



Lot: 146

Estimate: \$2000-3000

A French gilt overmantle mirror 170CM H110 CMW



Lot: 147

Estimate: \$600-1000

Hand carved wood Victorian and Gilt Wood pedestal

Kim's Auctions



Lot: 148

Estimate: \$2000-3000

3 piece rosewood drawing room suite with marble insert with silk upholstered cushions



Lot: 149

Estimate: \$400-600

Japanese bronze candlestick with bird decoration.



Lot: 150

Estimate: \$100-150

Wooden hand painted fruit comport



Lot: 151

Estimate: \$600-1200

24ct Gilt Metal Figures on Green Marble Bases



Lot: 152

Estimate: \$300-400

French ebony and brass inlaid writing box



Lot: 153

Estimate: \$3500-4500

Superb quality antique Victorian figured walnut bookcase/show cabinet with 1 key



Lot: 154

Estimate: \$200-400

Famille rose porcelain table lamp with shade



Lot: 155

Estimate: \$18000-25000

Hugh Sawrey (1919-1999) Outback gathering, oil on canvas, 101x101cm, signed lower right



Lot: 156

Estimate: \$800-1200

Tibetan bronze seated statue on double lotus base holding a cup. Kangxi period with 18th century Tang mark. Ex Toorak collection



Lot: 157

Estimate: \$2000-3000

Rare Chinese 19thC cherrywood 6 door 2 drawer blanket chest of 4 sections with black lacquer and gold inlaid panels 180cm H 76cm W 48cm D approx



Lot: 158

Estimate: \$9000-12000

Roman Period Egyptian Encausting on wood. Mummy Portrait



Lot: 159

Estimate: \$50-100

Machine made floor rug 180 x 120cm



Lot: 160

Estimate: \$1000-2000

Indo Granite Stone Statue - 16th Century South India



Lot: 161

Estimate: \$3000-5000

ebony and bouille inlaid single door credenza with ormolu mounts 105 CM H 147CM W 40CM D



Lot: 162

Estimate: \$1000-2000

Large black marble mantle clock



Lot: 163

Estimate: \$2000-3000

A Pr Sevres mark Tall lidded vases Green body with Romantic panels and Ormolu Mounts C 1900 H 52 cm



Lot: 164

Estimate: \$8000-12000

A Magnificent large Louis XV manner Bracket clock in floral Vernis Martin with Rococo Ormolu mounts and sun-god pendulum C 1840



Lot: 165

Estimate: \$800-1200

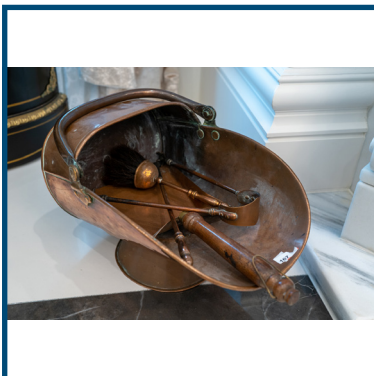
Ormolu mounted Victorian 3 section expanding fire fender



Lot: 166

Estimate: \$200-400

Set of 5 fire tools on stand



Lot: 167

Estimate: \$150-300

Early Victorian Copper and Brass Coal Scuttle with tools



Lot: 168

Estimate: \$5000-8000

Large silver presentation cup by Richard Henwell 1871



Lot: 169

Estimate: \$300-600

Pair of Sterling Silver Tall Candlesticks



Lot: 170

Estimate: \$2200-2800

A 10th C Library table Louis XVI style carved cabriole legs inset Hide Top
C 1860



Lot: 171

Estimate: \$300-500

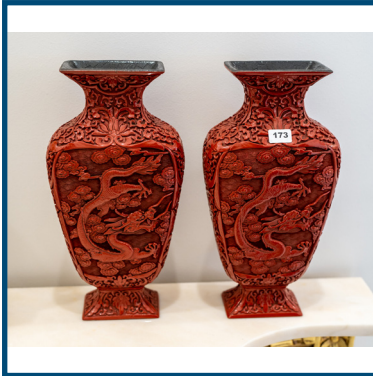
Black upholstered leather directors chair



Lot: 172

Estimate: \$7000-12000

David Bromley Blowing Bubbles, 2019 acrylic on canvas 152 x 183 cm
signed lower right



Lot: 173

Estimate: \$1000-2000

Pair of red lacquer vases 30cm H



Lot: 174

Estimate: \$700-1400

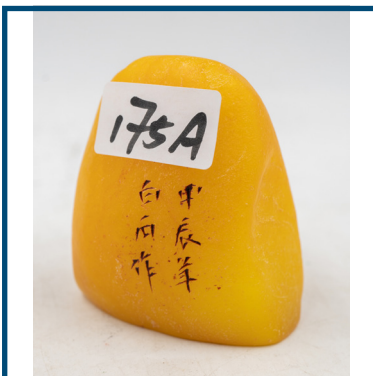
1900-1910 Junhams Carved Mahogany Mantle Clock with Chimes



Lot: 175

Estimate: \$500-1000

Early Chinese dark blue glazed Meiping. 18cm H With Qialong mark to the base



Lot: 175A

Estimate: \$300-600

Yellow soap stone seal signed. BAI SHI



Lot: 176

Estimate: \$500-1000

Pair of white hetian jade tea cups in presentation box



Lot: 177

Estimate: \$1500-3000

A pair of chen xiang wood bracelets



Lot: 178

Estimate: \$300-500

Ivory handled duster



Lot: 179

Estimate: \$6000-8000

Charles Blackman (1928-2018)-Alice, monotype, 77x77cm, signed lower right



Lot: 180

Estimate: \$18000-25000

Old Kingdom limestone wall fragment from a Mastaba. The front surface depicting a Priest wearing a short wig and leopard skin cloak , one hand holding a staff the other a sceptre. In front of the priest is his son. Still vibrant original pigment decoration. Circa 5th to 6+th Dynasty.



Lot: 181

Estimate: \$100-200

Royal Doulton ' Lady in Red Dress' figurine. 19cm H



Lot: 182

Estimate: \$3000-6000

Egyptian Limestone Dummy Canopic Jar of Hapy. 600-300 BC



Lot: 183

Estimate: \$350-700

1930's Moorecroft jug with fruit decoration



Lot: 184

Estimate: \$200-400

Silver plated EPNS Spirit Kettle on Stand



Lot: 185

Estimate: \$80-150

Crown Devon Blue Vase. 13cm H



Lot: 186

Estimate: \$200-400

Val Saint Lambert ruby and clear vase. 23cm H



Lot: 187

Estimate: \$400-600

Daum' crystal pin dish with rooster decoration



Lot: 188

Estimate: \$80-150

Carlton Ware 'Flambe' vase with floral decoration



Lot: 189

Estimate: \$150-300

Unusual EPNS silver vase with 4 varied display options



Lot: 190

Estimate: \$1000-2000

Chinese watercolour scroll of still life Signed GU QIUYUN AND DATED AND STAMPED



Lot: 191

Estimate: \$10000-20000

Chinese watercolour scroll of horse signed XU BEIHONG with stamp

Kim's Auctions



Lot: 192

Estimate: \$1000-3000

A Chinese watercolour scroll of still life signed WANG XUETAO and with seal



Lot: 193

Estimate: \$2000-4000

Carved green jade septure RUYI



Lot: 194

Estimate: \$1500-3000

A pair of early Chinese coral red dragon pattern tea cups with young heng mark and presentation box with dragon pattern



Lot: 195

Estimate: \$300-500

A Chinese Volcanic Duan Grey Stone Mid 19th C Calligraphy Ink Slab ,profusely carved with a dragon and phoenix design on outer rim ,signed with chop carved into base,25 x 18 Cm,



Lot: 196

Estimate: \$250-500

19th Century European Classical Alabaster Female Bust on marble, very good condition

Kim's Auctions



Lot: 197

Estimate: \$400-600

A pair of Sperm whale tooth specimens. Early 20th Century, South Eastern Australia



Lot: 198

Estimate: \$1000-2000

A fine cast bronze dragon patterned incense burner with dragon handles



Lot: 199

Estimate: \$300-500

Song style double handled incense burner on tripod base



Lot: 200

Estimate: \$45000-65000

David Boyd,(1924 - 2011)The Old King Has Fallen ,oil on canvas ,signed lower left .121 x 151 cm

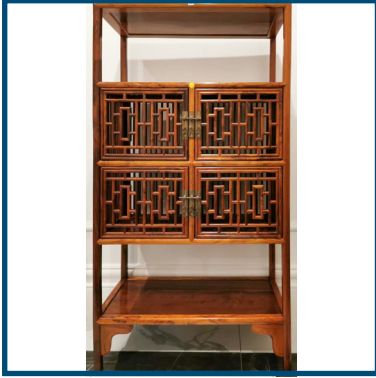


Lot: 201

Estimate: \$15000-30000

A Pair of Important Qing Dynasty " lampholder" chairs made from Huanghuali wood .Excellent condition .Comes with certificate of Antiquity.

Kim's Auctions



Lot: 202

Estimate: \$25000-60000

A highly important Chinese Qing Dynasty display cupboard made from Huanghuali wood. 168CMH 90CM W 44CM D Comes with certificate of Antiquity



Lot: 203

Estimate: \$4000-6000

A large Chinoiserie Commode in Red Lacquer serpentine shape with Gilt Bronze mounts and marble top W 125 cm



Lot: 204

Estimate: \$6500-8500

Two ivory figurines of man and woman on wooden stands. 76cm H



Lot: 206

Estimate: \$100-200

Brass Spirit Kettle on Stand



Lot: 207

Estimate: \$1500-3000

Ken Johnson (born 1950) Spot Fires, oil on paper, 75x105cm, signed lower left



Lot: 208

Estimate: \$800-1500

A fine Chinese rosewood sideboard with hand-carved doors and drawers. Ideal TV cabinet. 87CM H 183CM W 48CM D



Lot: 209

Estimate: \$250-500

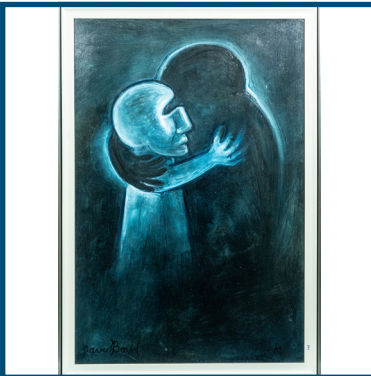
18. 20th Century German KPM Porcelain & Bronze Plaque, signed. Very good condition



Lot: 210

Estimate: \$150-300

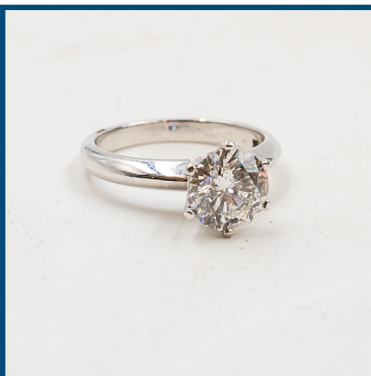
19th Century Finely Painted Porcelain on Copper Charger



Lot: 211

Estimate: \$10000-15000

David Boyd (1924-2011) The Embrace, oil on board, 121x80cm, signed lower left



Lot: 212

Estimate: \$30000-40000

Platinum and 18ct white gold diamond ring featuring a round brilliant cut diamond 2.08ct g colour p1 clarity size is N½ Valuation \$59 500



Lot: 213

Estimate: \$20000-25000

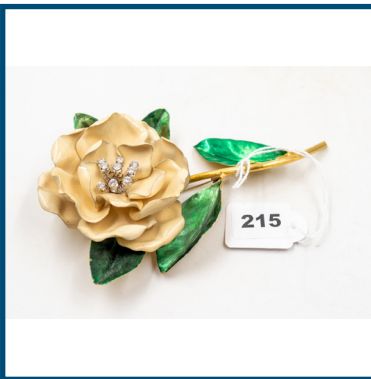
Frank Muller Cintre Curvex wrist watch. Model dream 7500 automatic Case is 18ct white gold and is set with round brilliant cut diamonds please note this watch has automatic movement Swiss made. With original box



Lot: 214

Estimate: \$10000-15000

6ct Emerald of excellent colour and clarity & Diamond set pendant set in 18ct white gold. Valuation @ 2019 \$22 000



Lot: 215

Estimate: \$17000-21000

Rare & Unique Collectors limited edition Handmade vintage 18ct yellow gold diamond rose brooch Featuring 9 round brilliant cut diamonds claw set approx. 1.20ct Vs clarity F colour. The brooch is solid gold and is hand enameled in multiple colours. The brooch weighs 90.17 grams. It is rare and unique Valuation \$45 000



Lot: 216

Estimate: \$1500-3000

Stunning double diamond set band with a halo set 1.4ct tanzanite of exquisite colour and clarity. The ring is hand crafted 4.52 grams the diamonds are F colour si clarity Valuation \$7990



Lot: 217

Estimate: \$8000-10000

18ct rose & white gold hand crafted and designed by local artisan bespoke jeweller Featuring a 3ct pear shaped sapphire with G colour si clarity diamonds to the shoulders Valuation \$18 990



Lot: 218

Estimate: \$8000-10500

18ct white gold diamond & Sapphire necklace featuring 3 oval cut and 2 pear cut vivid blue colour with diamonds f colour Vs clarity Valuation \$18 990



Lot: 219

Estimate: \$30000-40000

Magnificent 12.50ct Diamond E colour VS clarity tennis necklace 44.5cms long 21.65 grams Valuation \$62 000



Lot: 220

Estimate: \$400-800

Italian walnut and marquetry ladies desk with cabriole legs and ormolu mounts. 125cm H x 96cm W x 50cm D



Lot: 220A

Estimate: \$2000-4000

1 x 18ct [750] (stamped) white gold modern dress ring claw set with a tear drop en cabochon cut solid boulder opal matrix 5.8cts. (known weight) (16.9mm. x 11.3mm. x 4.2mm.), (Gemmological Association of Australia nomenclature type 3, colour type N 5). The ring is claw set on the shoulders with 8 x approx. 2pt. modern round brilliant cut diamonds. The ring has a low rounded shank 4mm. wide. Total weight of the piece: 9.0gms. Valuation: \$15,000.00.



Lot: 220B

Estimate: \$1000-2000

1 x 18ct [750] (stamped) white gold modern dress ring of Eastern origin claw set with a central piece of carved type A green Jadeite 17mm. x 11.7mm. x 1.6mm. and claw set with 4 x approx. 10pt. (3mm. ø) modern round brilliant cut diamonds. The ring has a low rounded shank 3.2mm. wide with a leaf design on the shoulders. Total weight of the piece: 8.5gms. Valuation: \$7,500.00.



Lot: 220C

Estimate: \$2500-5000

1 x 18ct [750] (stamped) yellow gold modern dress ring claw set with a central emerald cut green tourmaline approx. 5cts. (11.2mm. x 9.2mm. x 5.6mm.). The shoulders are grain set with 12 x approx. 1pt. modern round brilliant cut diamonds. The ring has a flat tapered shank 6.8mm.-3.1mm. wide. Total weight of the piece: 8.1gms. Valuation: \$12,000.00.



Lot: 220D

Estimate: \$3000-4000

1 x 14ct [585] (tested) yellow gold modern flexible link line bracelet claw set with 48 x approx. 5pt. (2.3mm. ø) modern round brilliant cut diamonds and rub set with 6 x approx. 2pt tapered baguette cut diamonds. The bracelet has attached a 14ct [585] (stamped) heart charm channel set with 29 x approx. 2pt. tapered baguette cut diamonds and grain set with 3 x approx. 2pt. modern round brilliant cut diamonds. Total weight of the piece: . 13.2gms. Valuation: \$15,000.00



Lot: 220E

Estimate: \$3000-6000

1 x platinum (stamped) modern dress ring claw set with a central oval en cabochon cut solid white opal 2.1cts. (known weight) (11.2mm. x 9.4mm. x 4.3mm.), (Gemmological Association of Australia nomenclature type 1, colour type N 7), surrounded in two tiers with 46 x approx. 1pt.-1.5pt modern round brilliant cut diamonds and 6 x approx. 3pt. tapered baguette cut diamonds. The ring has a rounded shank 2.5mm. wide. Total weight of the piece: 10.2gms. Valuation: \$16,000.00



Lot: 221

Estimate: \$400-600

Kashmiri copper bowl depicting deities in repousse work. Circa 18th century A.D., Kashmir, North India



Lot: 222

Estimate: \$200-400

Chinese double handled vase with blue decoration



Lot: 223

Estimate: \$300-600

Silver plated pierced dish with glass bowl insert



Lot: 224

Estimate: \$400-800

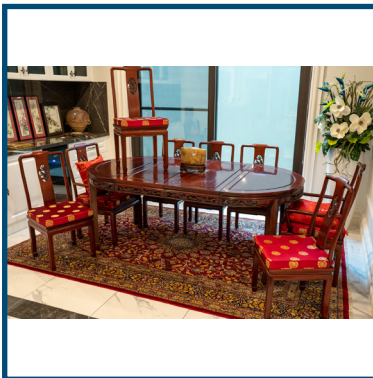
Austrian, Antique Bust Alabaster and Bronze, signed and Foundry Seal.
Very good condition.



Lot: 224A

Estimate: \$12000-15000

Piaget 18ct gold ladies wrist watch with diamond surround and numerals in
excellent condition



Lot: 225

Estimate: \$3000-4000

Early 20thC 9 piece rosewood dining setting consisting of extension table
with 8 chairs including 2 covers and red silk cushions .78CM H 200CM
L112CM W



Lot: 226

Estimate: \$1000-1500

A very fine large natural jade block on wooden base 22cm H 30cm W 15cm
D



Lot: 227

Estimate: \$650-1250

A Superb K.P.M. German Hand Painted Porcelain Plaque, 1844. Signed and dated lower left. Incised mark verso with a stamp of a tree and S.. Private Melbourne Collector



Lot: 228

Estimate: \$300-500

Block of pork rock paper holder



Lot: 229

Estimate: \$2000-3000

Pair of early Victorian Rococco style sterling silver candle sticks



Lot: 230

Estimate: \$500-800

A Ai ,(Born 1963),Bikers ,oil on Canvas,75 x 100 Cm ,Signed Lower Right



Lot: 231

Estimate: \$1000-1500

Superb Capadimonte porcelain panel of Adam and Eve with Angel in very fine hexagonal frame with etched brass and gemstone decoration .otal size 48cmH 44cm W



Lot: 232

Estimate: \$500-1000

Antique 19th Century Continental Hand Painted Plaque in carved frame.
Signed 25cm x 18cm



Lot: 233

Estimate: \$1000-2000

Art deco bronze statue of 2 seagulls in flight.signed G.H.LOURENT



Lot: 234

Estimate: \$1000-2000

Yangshao Period Pottery piece. 2nd Millenium BC



Lot: 235

Estimate: \$12000-16000

Pro Hart (1928 - 2006) Broken Hill, oil on board, 90x100cm, signed lower right



Lot: 236

Estimate: \$500-1000

Early Mongolian Porcelain Oil Lamp with hand painted spring theme and gilded edge. 5.5cm H 10.2cm W



Lot: 237

Estimate: \$500-1000

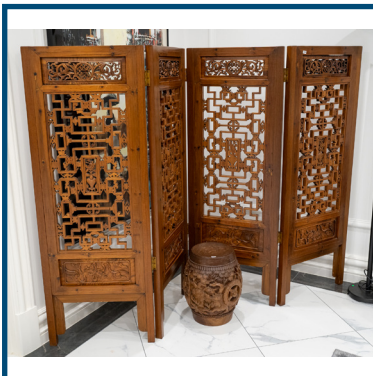
Lalique 'Dove' Vase. 18cm H



Lot: 238

Estimate: \$1500-2000

Song dynasty green glazed double fish display plates 21cm D



Lot: 239

Estimate: \$2000-3000

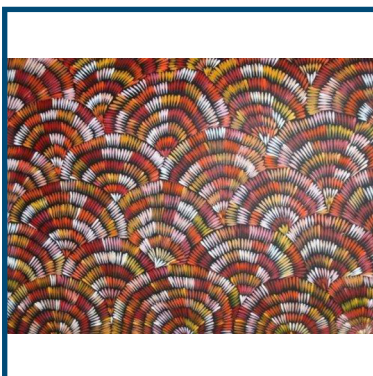
18thC Chinese red pine and elm wood hand carved 4 panel screen. 158CM H 57CMW EACH PANEL.



Lot: 240

Estimate: \$1000-2000

Pair of Royal yellow porcelain tea cups with bat decoration and youg zheng mark



Lot: 240A

Estimate: \$2000-3000

JANET GOLDER KNGWARREYE Yam Flower, 2017 Synthetic Polymer Paints on Belgian Linen 900 x 1200 mm comes with certificate

Kim's Auctions



Lot: 240B

Estimate: \$5000-6000

JORNA NEWBERRY Fire Dreaming, 2018 Synthetic Polymer Paints on Belgian Linen 910 x 1200 mm comes with certificate



Lot: 241

Estimate: \$500-1000

Crystal necklace with 6 14ct gold beads.



Lot: 242

Estimate: \$500-1000

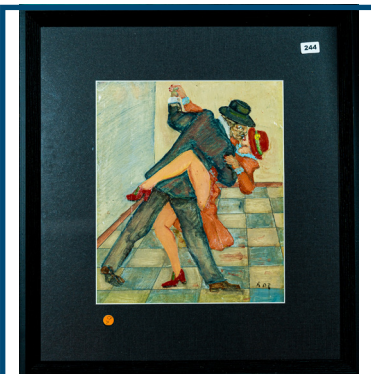
Republican Chinese Enamel and Silver Female Figurine



Lot: 243

Estimate: \$200-400

Pair of vintage cloissone vases with elephant head handles. 23cm H



Lot: 244

Estimate: \$300-500

Rodolfo Rodelli,(Born1932) TheTango,Watercolor On Paper,29.5 x 25 Cm,Signed Lower Right

Kim's Auctions



Lot: 245

Estimate: \$300-600

Antique French Oil Painting, interior genre scene with family, signed bottom right. 30cm H x 46cm W



Lot: 246

Estimate: \$200-500

Ironwood pencil holder



Lot: 247

Estimate: \$500-1000

Lalique Vase with Bird Decoration. 18cm H



Lot: 247A

Estimate: \$200-400

Yellow hand carved soap stone seal with lion decoration



Lot: 248

Estimate: \$2000-3000

Persian 100% Silk Rug with overall Foliate Design and Central Medallion, on Cream Ground, very good order, 87 x 169 cm

Kim's Auctions



Lot: 249

Estimate: \$1000-2000

Chinese watercolour scroll of spring scene with white rooster signed Jin MENGSHI with seal



Lot: 249A

Estimate: \$1000-2000

Chinese watercolour scene with rooster signed JIN MENGSHI



Lot: 249B

Estimate: \$1000-2000

Chinese watercolour of summer scene with monkey signed JIN MENGSHI with seal



Lot: 250

Estimate: \$1000-2000

French style silver gilt 7 drawer ladies desk.78CM H 160CM L 60CM D



Lot: 251

Estimate: \$2000-3000

AUTOMATIC CERAGEM massage bed BRAND NEW COST \$3200



Lot: 252

Estimate: \$100-200

Brass music stand



Lot: 253

Estimate: \$600-900

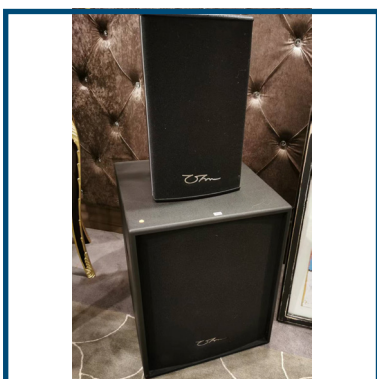
2 french style black lacquered inlaid and gilded pedestals. 1X 100CM 1X 80CM



Lot: 254

Estimate: \$300-500

A quantity of 4 artificial flower arrangements including porcelain ,crystal,vase and water jug,silver jardinier



Lot: 255

Estimate: \$500-800

2 quality speakers



Lot: 256

Estimate: \$600-800

Antique bronze sword

Kim's Auctions



Lot: 257

Estimate: \$1500-2000

Italian red coral necklace with 14ct Gold clasp



Lot: 258

Estimate: \$2000-3000

E Walter(1855 - 1891) Pre Raphaelite School ,Maiden With Lute, Oil On Canvas,60 x105.5 cm ,Signed Center Left



Lot: 259

Estimate: \$500-1000

A Hellenistic socketed spear head. Classic leaf form with raised central midrib The tip curved over from hitting some solid armour. Greek Empire circa 5th to 3rd Century B.C., Eastern Provinces



Lot: 260

Estimate: \$20-24

English porcelain toby jug 10cm H



Lot: 261

Estimate: \$400-600

A group of three Hellenistic "Peltast" arrowheads. Circa 5th to 3rd Century B.C., Mediterranean Region



Lot: 262

Estimate: \$150-300

A group of ten (10) Greek bronze arrowheads. Circa 5th to 3rd Century B.C., Mediterranean Region



Lot: 263

Estimate: \$300-500

A Group of three A Western to Eastern Zhou jade amulets in zoomorphic form. Western to Eastern Zhou Period, circa 770 to 222 B.C., China



Lot: 264

Estimate: \$500-1000

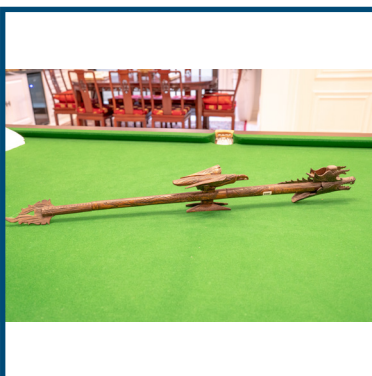
Qing dynasty red and black lacquer 5 drawer incense table . 90CM H 97CM W 51CM D



Lot: 265

Estimate: \$600-900

Superb large pair of 20thC cloisonne vases with floral and bird decoration. 40CM H



Lot: 266

Estimate: \$400-600

Unusual Chinese bone carved dragon sculpture. 100cm L



Lot: 267

Estimate: \$20-50

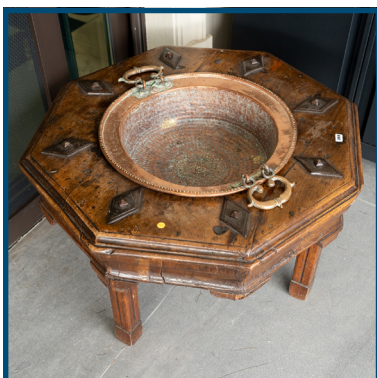
A 3 step ladder in good condition with clothes rail



Lot: 268

Estimate: \$4000-6000

Pasquale Giordino Acrylic on Canvas 107cm x 87cm. Signed top right



Lot: 269

Estimate: \$1500-3000

A Rare Spanish "Brasero" 18th C Walnut ,Iron mounted with Copper hand beaten Cauldron



Lot: 270

Estimate: \$1000-2000

19th century French walnut centre table with white marble top



Lot: 271

Estimate: \$500-800

Set of 8 Chinese porcelain, green glazed, hand painted tea service

Kim's Auctions



Lot: 272

Estimate: \$150-250

24 Royal Doulton plates - part set



Lot: 273

Estimate: \$3000-4000

11 piece Italian dining suite including 2 end carver chairs and extension table. Made in Italy by Scappini & Co. 250cm L x 120cm W



Lot: 274

Estimate: \$20-100

Porcelain Dinner Set for 6



Lot: 275

Estimate: \$3000-5000

Large Versace style designer rug. 295cm x 245cm



Lot: 276

Estimate: \$200-600

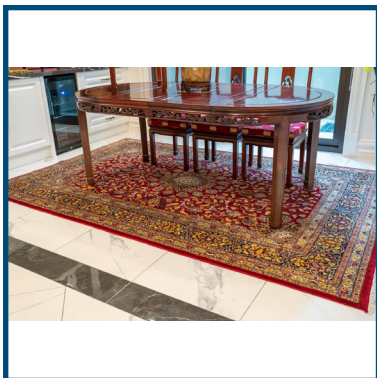
Tall Italian capodimonte lidded vase 80cm high REPAIRED base



Lot: 277

Estimate: \$400-600

Auto trolley with 4 drawers. Made in Italy by Scappini & Co.



Lot: 278

Estimate: \$2000-3000

Hand knotted Persian rug 300cm L 200 cm W



Lot: 279

Estimate: \$20-40

1X DON ANASTACIO TEQUILA



Lot: 280

Estimate: \$20-40

1X1921 CREME DE TEQUILA



Lot: 281

Estimate: \$20-40

1X BAILEYS IRISH CREAM



Lot: 282

Estimate: \$20-40

1X BERVILLE XO FRENCH BRANDY



Lot: 283

Estimate: \$20-40

1X BENEDICTINE



Lot: 284

Estimate: \$1000-1500

An Original Framed Flag produced for the Celebration of Queen Victoria's Diamond Jubilee in 1897(60 Years On The Throne),70 x 80 Cm



Lot: 285

Estimate: \$1000-1400

Allan Thomas Bernaldo , (1900-88) Sunny Day Over The River,Watercolour,45cm x 36cm,Signed Lower Right



Lot: 286

Estimate: \$20-40

1X MOËT AND CHANDON CHAMPAGNE



Lot: 287

Estimate: \$20-40

1X CAMUS XO COGNAC



Lot: 288

Estimate: \$400-600

6X Lake Cooper Estate Heathcote shiraz 2019



Lot: 289

Estimate: \$2000-3000

Alan Thos Bernaldo (1900-1988) Still Life, watercolour, 62x69cm, signed lower right



Lot: 290

Estimate: \$400-800

6 X Lake Cooper Estate Reserve Heathcote shiraz Rhapsody 2019



Lot: 291

Estimate: \$300-400

4X FOX CREEK 1997 RESERVE CABERNET SAUVIGNON



Lot: 292

Estimate: \$500-1500

A Box of 6 2016 LIN BIOA wine



Lot: 293

Estimate: \$20-40

1X PAULET FRENCH COGNAC



Lot: 294

Estimate: \$3000-4000

Fine antique ormolu mounted buhl single door cabinet with key 160CM H
70CM W 33CM d



Lot: 295

Estimate: \$20-40

1X OYSTERBAY CHARDONNAY 2007



Lot: 296

Estimate: \$20-40

1X JOHNNIE WALKER BLACK LABEL SCOTCH



Lot: 297

Estimate: \$20-40

1X AMARULA FRUIT CREAM



Lot: 298

Estimate: \$20-40

1X BAILEYS IRISH CREAM



Lot: 299

Estimate: \$300-600

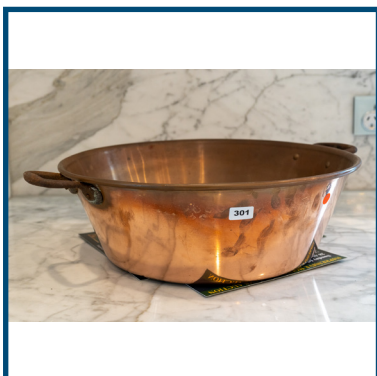
3 Large Copper saucepans with iron handles. Largest 23cm W x 13cm W



Lot: 300

Estimate: \$150-300

Large copper saucepan



Lot: 301

Estimate: \$100-300

Large French Copper Jam Pan

Kim's Auctions



Lot: 302

Estimate: \$600-900

Leon Hanson ,(1918 - 2011).Flinders St Melbourne ,Oil On Board,17 x 22cm,Signed Lower Right



Lot: 303

Estimate: \$200-300

Mahogany cased fish cutlery service for 12 . Total of 24 pieces



Lot: 304

Estimate: \$150-250

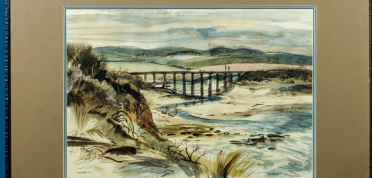
Superb cut crystal 2 branch candelbra. 41cm H



Lot: 305

Estimate: \$8000-10000

Walter Follen Bishop (1856-1936)- Droving the Sheep, watercolour, 60x100cm, signed lower left



Lot: 306

Estimate: \$700-1000

Kenneth Jack (1924 - 2006), Kilkunda Trestle Railway Bridge,Watercolour,37 x 53.5,Signed lower Right 1960



Lot: 308

Estimate: \$10000-13000

14ct white gold watch. Featuring 152 brilliant cut diamonds grain set. Approx. 1.00ct in total f colour si clarity. Watch has 2mm cabochon cut sapphire in the crown with a crocodile (authenticated)



Lot: 309

Estimate: \$2000-3000

18ct white gold sapphire & diamond earrings. 2.95ct set with g colour si clarity diamonds Valuation \$5500



Lot: 310

Estimate: \$3500-4500

Stunning lavender Jade & diamond earrings set in 18ct yellow gold g colour si clarity Valuation \$8800



Lot: 311

Estimate: \$4500-5500

8ct yellow gold diamond hinged bangle. Featuring 33 princess cut diamonds channel set 2.00ct g colour si clarity. 15.55 grams Valuation 2020 Valuation \$11 900



Lot: 312

Estimate: \$1200-1800

A fine hide upholsteres long stool with wooden base 45CM H 163CM L 51CM D



Lot: 313

Estimate: \$1500-2000

18ct yellow gold coral ring. Featuring hand carved coral cameo carving, bezel set, approx. 21x12x5.3 mm. Valuation \$4500



Lot: 314

Estimate: \$3000-6000

14K Yellow Gold, Ceylon Sapphire and Diamond, Line Bracelet. The design features, 20 oval cut, medium blue, Ceylon Sapphires (18.30ct TSW, eye clean - slightly included) 4 claw set. Decorating between each stone in sets are, 60 round brilliant cut Diamonds (0.93ct TDW, I-K colour, SI2-P2 clarity), 4 claw set. Bracelet has a box clasp with safety latch. Bracelet is 18.50cm in length. Comes with Valuation.



Lot: 315

Estimate: \$1500-3000

14K White Gold, Emerald and Diamond, Statement Necklace. The design centrally features, one oval cut, dark bluish-green, Emerald (6.71ct, eye visible inclusions), 4 claw set. Surrounding the centre in a halo are, 40 round brilliant cut, Diamonds (0.19ct TDW, H-J colour, SI2-I1 clarity), bead set. Decorating the chain are, 4 round brilliant cut, Diamonds (0.14ct TDW, G-H colour, SI2-I1 clarity), bezel set. Chain length is adjustable between 45 and 50cm. Comes with Valuation.



Lot: 316

Estimate: \$15000-25000

14K White Gold, Pink Sapphire and Diamond, Halo Tennis Necklace. The design features, 51 oval cut, medium purplish-pink, Sapphires (55.61ct TSW, eye clean clarity), 4 claw set. Surrounded by, 1033 round brilliant cut, Diamonds (4.17ct TDW, G-H colour, SI1-I-2 clarity), micro claw set. The necklace has a box clasp closure with one safety catch. The necklace measures 52cm in length and features a box clasp closure with on safety catch. Comes with Valuation.



Lot: 317

Estimate: \$800-1200

A pair of French mid century Sevres style porcelain and bronze mounted ewer vases 56CM H

Kim's Auctions



Lot: 318

Estimate: \$5000-7000

14K White Gold, Pink Sapphire and Diamond, Halo Tennis Bracelet. The design features, 17 oval and pear cut, medium purplish-pink, Sapphires (17.08ct TSW, eye clean - minor eye visible inclusions), claw set. Surrounding the stones are, 352 round brilliant cut, Diamonds (1.90ct TDW, H-J colour, SI1-I2 clarity), micro claw set. The bracelet features a box clasp closure with on safety catch. Bracelet length is 18cm. Comes with Valuation.



Lot: 319

Estimate: \$2500-3500

Howard Arkley (1951-1999) - Triple Fronted Brick Veneer, screenprint, 92x117cm, signed lower right



Lot: 320

Estimate: \$2000-4000

18K Rose Gold, Morganite and Diamond, Halo Ring. the design centrally features, one oval cut, light pink, Morganite (5.94ct, eye clean clarity), 4 claw set. Surrounding the centre in a halo are, 36 round brilliant cut, Diamonds (0.24ct TDW, I-K colour, SI2-P1 clarity), claw set. Decorating the band are, 12 round brilliant cut, Diamonds (0.15ct TDW, I-K colour, SI2-P1 clarity), claw set. Ring Size M. Comes with Valuation.



Lot: 321

Estimate: \$600-1200

Pair of wooden seats. Early 20th century



Lot: 322

Estimate: \$20000-30000

8.18ct Diamond tennis bracelet g colour vs2 clarity featuring 44 round brilliant cut diamonds 18cms long 14.38 grams Valuation \$48 950



Lot: 323

Estimate: \$25000-35000

6.94ct Emerald & diamond ring set in 18ct white & yellow gold. Featuring a cushion cut centre set emerald of excellent colour & clarity 12.2X10.3X7.2 mil and with 1.44ct of diamonds g colour si clarity Valuation \$55 000



Lot: 324

Estimate: \$8500-10000

Emerald & diamond bangle 23.6 grams set in 18ctwhite gold. The cushion cut emerald 1.60ct with an additional 130 round brilliant cut diamonds 2.0ct in total 2018 valuation \$17 000



Lot: 325

Estimate: \$18000-22000

18ct yellow and white gold ruby and south sea pearl bangle. Featuring two south sea pearls with 264 round brilliant cut diamonds grain setg colour si clarity 2 baguette cut diamonds g colour vs clarity round rubies 4.26ct dark red in colour. The bracelet weighs 53.85 grams Valuation 2021 \$38 950



Lot: 326

Estimate: \$7000-9000

18ct white gold and ruby ring featuring 132 round brilliant cut diamonds claw set 1.15ct in total combined weight g colour si clarity round cut rubies pave set 3ct . Ring weighs 16.7 grams is a size M (resizable) Valuation \$13950



Lot: 327

Estimate: \$2500-5000

14K White Gold, White and Yellow Diamond, Tennis Bracelet. The design features, 35 round brilliant cut, Diamonds (1.59ct TDW, I-K colour, SI1-P2 clarity), claw set. Accompanied by, 35 round brilliant cut, fancy orangy yellow, Diamonds (1.88ct TDW, VS2-SI2 clarity), claw set. The bracelet has a 14K White Gold, box lock closure. Bracelet length is 17.7cm. Comes with Valuation.



Lot: 328

Estimate: \$1000-3000

14K Yellow Gold, White Cultured South Sea Pearl and Diamond, Infinity Pendant. The design centrally features, one near-round, silvery-white, Cultured South Sea Pearl (14.30mm size, slight blemishes, very good lustre). Decorating the design are, 92 round brilliant cut, champagne Diamonds (0.63ct TDW, SI2-P1 clarity), bead set. Comes with Valuation.



Lot: 329

Estimate: \$1500-3000

14K White Gold, Ceylon Sapphire and Diamond, Double Drop Earrings. The centres feature, 4 oval cut, medium-deep blue, Ceylon Sapphires (3.71ct TSW, slightly included), 4 claw set. Decorating the centres in halos and the links are, are, 66 round brilliant cut, Diamonds (0.66ct TDW, J-L colour, SI1-P2 clarity), claw set. Earrings have post backs and come with, 14K White Gold, butterfly clasps. Comes with Valuation.



Lot: 330

Estimate: \$7000-9000

Jamie Boyd (Born 1949)- Shoalhaven, oil on canvas, 90x121cm, signed lower right



Lot: 331

Estimate: \$500-1500

Unusual Oriental miniature display stand. With 6 collectible jade seals, scholars rock and agate vase etc.



Lot: 332

Estimate: \$1000-2000

19th century French walnut vitrine, makers label 'Paris' inside door



Lot: 333

Estimate: \$100-300

Set of 5 terracotta oriental tea service



Lot: 334

Estimate: \$200-300

Early 20th century soapstone hand carved teapot and inkwell



Lot: 335

Estimate: \$400-800

Chinese terracotta teapot with impressed seal to base. Complete with certificate.



Lot: 336

Estimate: \$500-1000

Two early Qing Dynasty teapots



Lot: 337

Estimate: \$200-300

Unusual Terracotta figural tree trunk shaped teapot.



Lot: 338

Estimate: \$800-1200

John Borrack 'Mobs Pump, Wallaga Lake, NSW' watercolor, 36 x 53 cm
signed Lower Right 1973



Lot: 339

Estimate: \$800-1200

Ming Dynasty style Chinese rosewood 2 door, 2 drawer cabinet with hand carved dragon pattern. 83CMH 136CM W 45CM D



Lot: 340

Estimate: \$150-250

20thC black metal standard lamp. 178CM H



Lot: 341

Estimate: \$600-800

Framed porcelain of rooster panel 42x 31cm



Lot: 342

Estimate: \$200-300

Bisque porcelain wall plaque of a courting couple. |80



Lot: 343

Estimate: \$200-300

Large decorative planter with large artificial flowers.Total 170cm H



Lot: 344

Estimate: \$400-600

Italian composition statue of Carpenter and Apprentice 56cm H



Lot: 345

Estimate: \$100-200

A pair of amber glass light shades 28CM H



Lot: 346

Estimate: \$400-600

A large jade rock



Lot: 347

Estimate: \$300-500

A pair of Japanese 19thC cast iron teapot



Lot: 348

Estimate: \$100-200

Small Korean wooden medicine cabinet



Lot: 349

Estimate: \$200-300

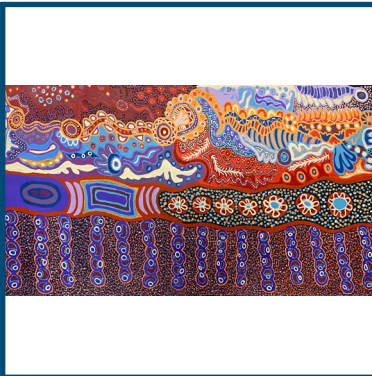
Signed lithograph by HUCHET OF LES ANTILLES



Lot: 350

Estimate: \$100-200

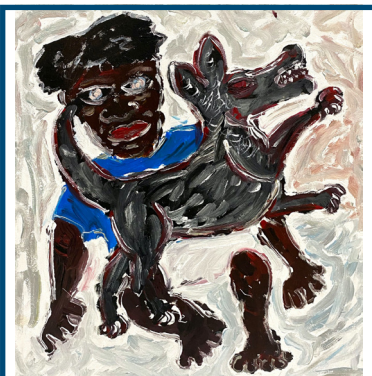
5 tier wooden pot stand 140cmH 37cm W 37cmD



Lot: 350A

Estimate: \$5000-6000

TJUNKAYA TAPAYA Kungkarangkalpa (Seven Sisters), 2019 Synthetic Polymer Paints on Canvas 970 x 1790 mm comes with certificate



Lot: 350B

Estimate: \$3000-4000

SILAS HOBSON Untitled, 2016 Synthetic Polymer Paints on Canvas 970 x 890 mm COMES WITH CERTIFICATE



Lot: 351

Estimate: \$8000-12000

Charles Blackman(1928-2018),Brahms Composer Series ,Charcoal On Paper,66 x 45 cm ,Signed Lower Left



Lot: 352

Estimate: \$5000-7000

14K White Gold, Aquamarine and Diamond, Halo Bracelet. the design features, 10 oval cut, light blue, Aquamarines (25.00ct TSW, eye clean clarity), 4 claw set. Surrounding the stones in halos and decorating the joins are, 202 round brilliant cut, Diamonds (4.48ct TDW, H-J colour, SI1-I2 clarity), micro claw set. Bracelet has box clasp with safety latch. Bracelet length is 18.70cm. Comes with Valuation.



Lot: 353

Estimate: \$1500-3000

14K White Gold, Aquamarine and Diamond, Statement Necklace. The design centrally features, one oval cut, light greyish-blue Aquamarine (8.90ct, minor eye visible inclusions), 4 claw set. Surrounding the centre in a halo are, 46 round brilliant cut, Diamonds (0.37ct TDW, H-J colour, SI2-I2 clarity), micro claw set. Decorating the chain are, 10 round brilliant cut, Diamonds (0.27ct TDW, H-J colour, SI1-I2 clarity), bezel set. Chain length is 46cm. Comes with Valuation.



Lot: 354

Estimate: \$400-500

Large gold framed oil on canvas of seascape 106cm H 166cm W



Lot: 355

Estimate: \$350-450

Chinese wooden framed hall mirror with 18thC INSET WOODEN CARVED PANEL 72CM H 38CM W



Lot: 356

Estimate: \$700-900

Peg Maltby (1899-1984)-Rosellas, watercolour, 34x25cm, signed lower left



Lot: 357

Estimate: \$800-1200

Hanson Leon ,(1918 - 2011).Coastal Seascape ,Near Mt Macquarie NSW ,Oil On Board,45 x37cm,Signed Lower Left



Lot: 358

Estimate: \$600-800

Clifford Dudley wood,(1905-1980)The Pier,Watercolor On Paper,25 x 36 Cm ,Signed lower Left



Lot: 359

Estimate: \$1000-2000

Louis Xvth Kingwood and floral inlaid1 drawer bureau plat with brass banding 70CM H 100CM W 63CM D



Lot: 360

Estimate: \$1000-2000

Bruce Earles Holiday Cove, 2022 oil on canvas 60 x 70 cm signed and dated lower left signed, dated and titled verso



Lot: 361

Estimate: \$300-600

Filigree jade Chinese antique bracelet



Lot: 362

Estimate: \$10000-13000

Stunning 11.13 ct ruby earrings, set with gem quality rubies and vs1 diamonds white gold and palladium 18ct 2015 valuation \$18 650



Lot: 363

Estimate: \$300-600

A pair of spinache Jade and sterling silver necklaces



Lot: 364

Estimate: \$7500-8500

1.05ct Bright red silk Ruby of the highest quality. Set in a split double diamond set band. Diamonds are f colour Si clarity Valuation \$16 900



Lot: 365

Estimate: \$8000-9000

18ct yellow & white gold diamond bracelet. Featuring 206 round brilliant cut diamonds, grain set. 2.76ct in total F colour VS clarity Valuation 2019 \$15 700



Lot: 366

Estimate: \$4000-5000

Antique 18ct white gold diamond ring. Featuring centre round old cut diamond .45 ct g colour si clarity with an additional 2 round old cut diamonds .50ct g colour si clarity 9.05 grams. Valuation 2020 \$8950



Lot: 367

Estimate: \$300-500

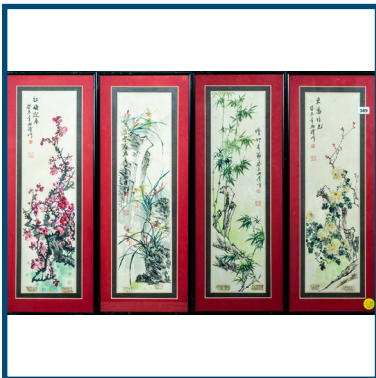
Japanese 19TH C ladies embroidered silk Obi [BELT].390CM L32CM W



Lot: 368

Estimate: \$500-1000

Charles Troedel (1835 - 1906), Bourke Street East 1863, Coloured Lithograph, 26.5 x 36.5 Cm, Drawn by F Cogne, Printed By C Troedel, Titled On Stone Below Image and Signed lower Right



Lot: 369

Estimate: \$500-800

Set of 4 framed early Chinese watercolours of 4 seasons on rice paper with incipition and seals. 43CM H 12CM W



Lot: 370

Estimate: \$20-40

box lot of artificial flowers

Kim's Auctions



Lot: 371

Estimate: \$800-1200

Joseph Attard,(Born C1950),Melville Caves ,Watercolor On Paper,31.5 x 74 Cm ,Signed Lower Left 1994



Lot: 372

Estimate: \$200-300

Large camphor wood trunk 58cm H 120cm W 52cm D



Lot: 373

Estimate: \$50-100

small camphor wood trunk 40cm H 85CM W 41CM D



Lot: 374

Estimate: \$100-200

BABY COT AND TOYS



Lot: 375

Estimate: \$800-1600

Gilt framed oil painting French farmhouse by lake, signed Louis Garot

Kim's Auctions



Lot: 376

Estimate: \$700-1400

Gilt framed oil painting French landscape with deer by the lake, signed



Lot: 377

Estimate: \$800-1200

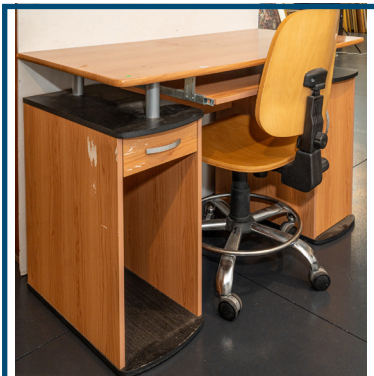
Large industrial vacuum cleaner



Lot: 378

Estimate: \$200-300

brand new industrial compressor



Lot: 379

Estimate: \$100-200

modern desk and chair



Lot: 381

Estimate: \$100-200

pair of aluminium lamp posts



Lot: 382

Estimate: \$200-400

Miele dishwashing machine



Lot: 383

Estimate: \$500-1000

MIELE WASHING MACHINE AND DRYER



Lot: 384

Estimate: \$200-400

stainless steel LG 2 door fridge 177CM H 92CM W 62 CM D



Lot: 385

Estimate: \$1200-2000

John Mcqualter (Born 1949)- Beach Scene, oil on board, 36x74cm, signed lower right



Lot: 386

Estimate: \$300-500

A Pair of gilt French style mirrors 163CM H 56CM W



Lot: 387

Estimate: \$100-200

Framed watercolour on rice paper of flower with seal. 67CM H 46 CM W



Lot: 388

Estimate: \$700-1000

Ronald Bull,(1942-1979) Misty Morning,Watercolour,49 x 67 cm ,Signed Lower Left



Lot: 389

Estimate: \$700-800

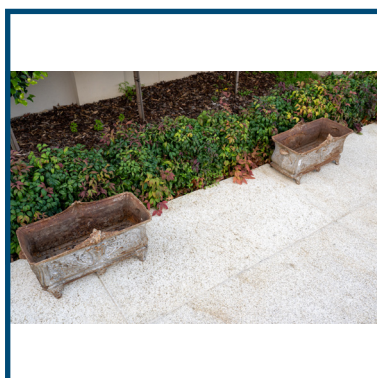
Gold framed Wickham Perry oil on board country scene



Lot: 390

Estimate: \$300-400

Reverse painted on glass portrait of man in timber fame



Lot: 390A

Estimate: \$700-1200

Pair 19th century French cast iron planters



Lot: 390B

Estimate: \$700-1200

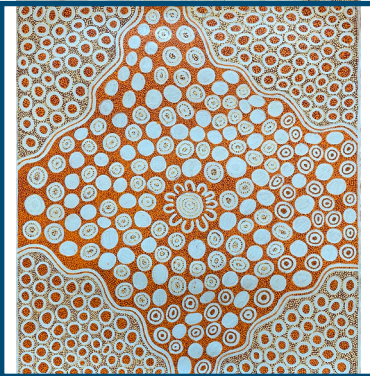
Pair 19th century French cast iron planters



Lot: 390C

Estimate: \$5000-7000

MICK JAWALJI 'Wuruwa' Warmun Art Centre. Natural Earth Pigments on Board. 800 x 600mm COMES WITH CERTIFICATE



Lot: 390D

Estimate: \$3000-4000

CLARA NAPURRULA Women's Ceremony, 2017 Synthetic Polymer Paints on Belgian Linen 1015 x 1115 mm COMES WITH CERTIFICATE



Lot: 391

Estimate: \$100-200

Porcelain tea service with 6 x tea cup trio sets



Lot: 392

Estimate: \$150-250

3 cut crystal decanters with labels



Lot: 393

Estimate: \$150-300

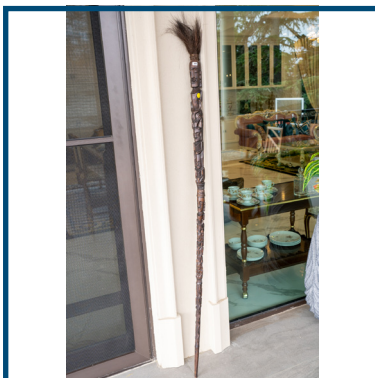
Tall ceramic vase on tripod base. 52cm H



Lot: 394

Estimate: \$400-600

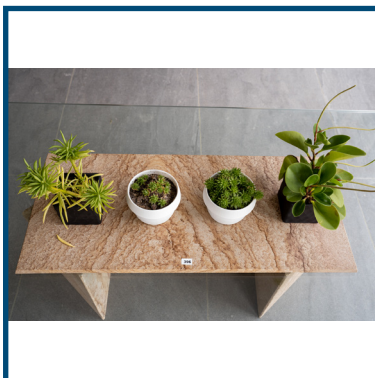
Two metal stainless steel & faux marble top pedestals



Lot: 395

Estimate: \$150-250

Hand carved African Spear. Appro 1.7m tall



Lot: 396

Estimate: \$20-40

Four potted succulent plants



Lot: 397

Estimate: \$200-600

3 potted artificial plants. Tallest 1 metre High

Kim's Auctions



Lot: 398

Estimate: \$80-150

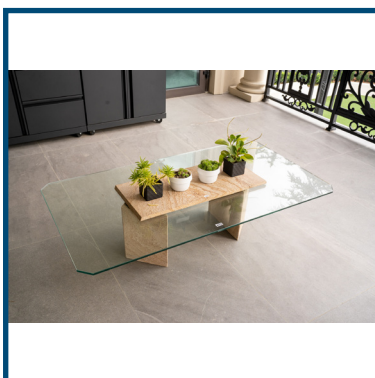
Tall wood and brass candle stand. 145cm H



Lot: 399

Estimate: \$100-200

Contemporary 7 piece dining setting. 210cm L x 80cm W x 74 H



Lot: 400

Estimate: \$200-400

Large glass and stone coffee table. 150cm L x 80cm W x 35cm H